

## 2 INTERGRATED ARTWORKS

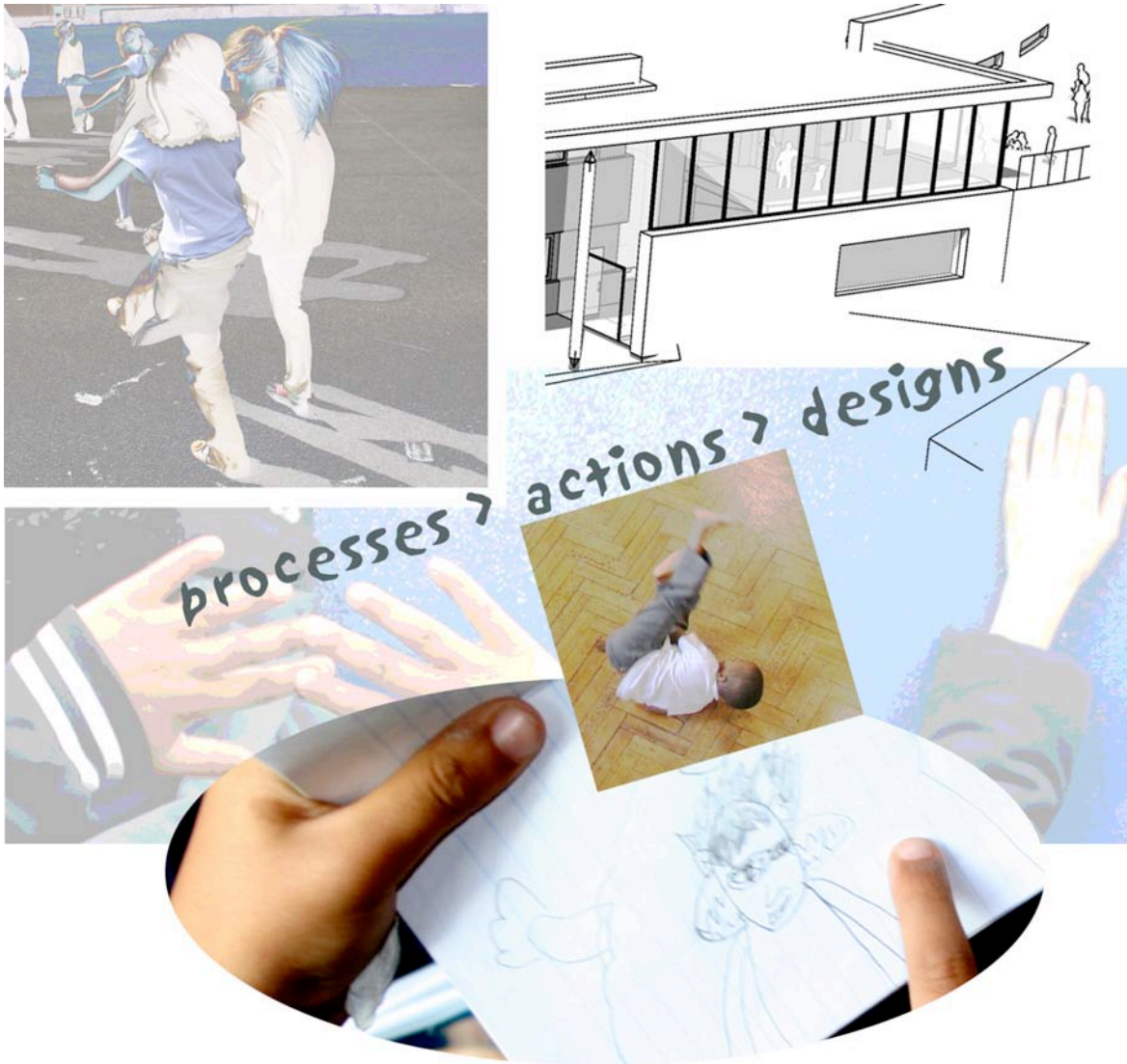
for Barton Hill School & Childrens' Centre

- 1) Entrance & Library Glazing
- 2) Responsive sound activated light feature

PLUS ACTIVE PARTICIPATION  
PROCESS BASE >



**SHED**

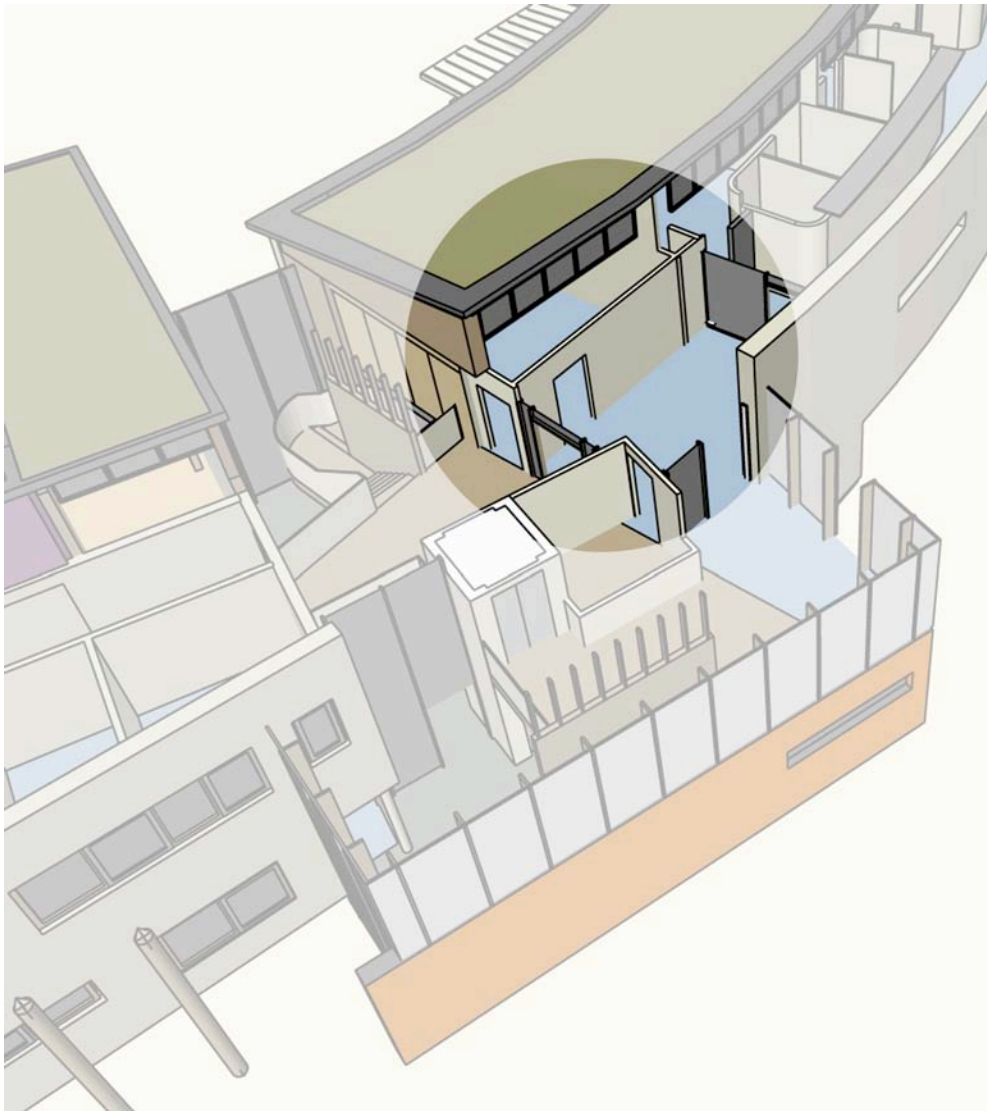


## ENTRANCE GLAZING

Designs will be developed from the generative processes that occur through 'SHED' (please see accompanying SHED info.)



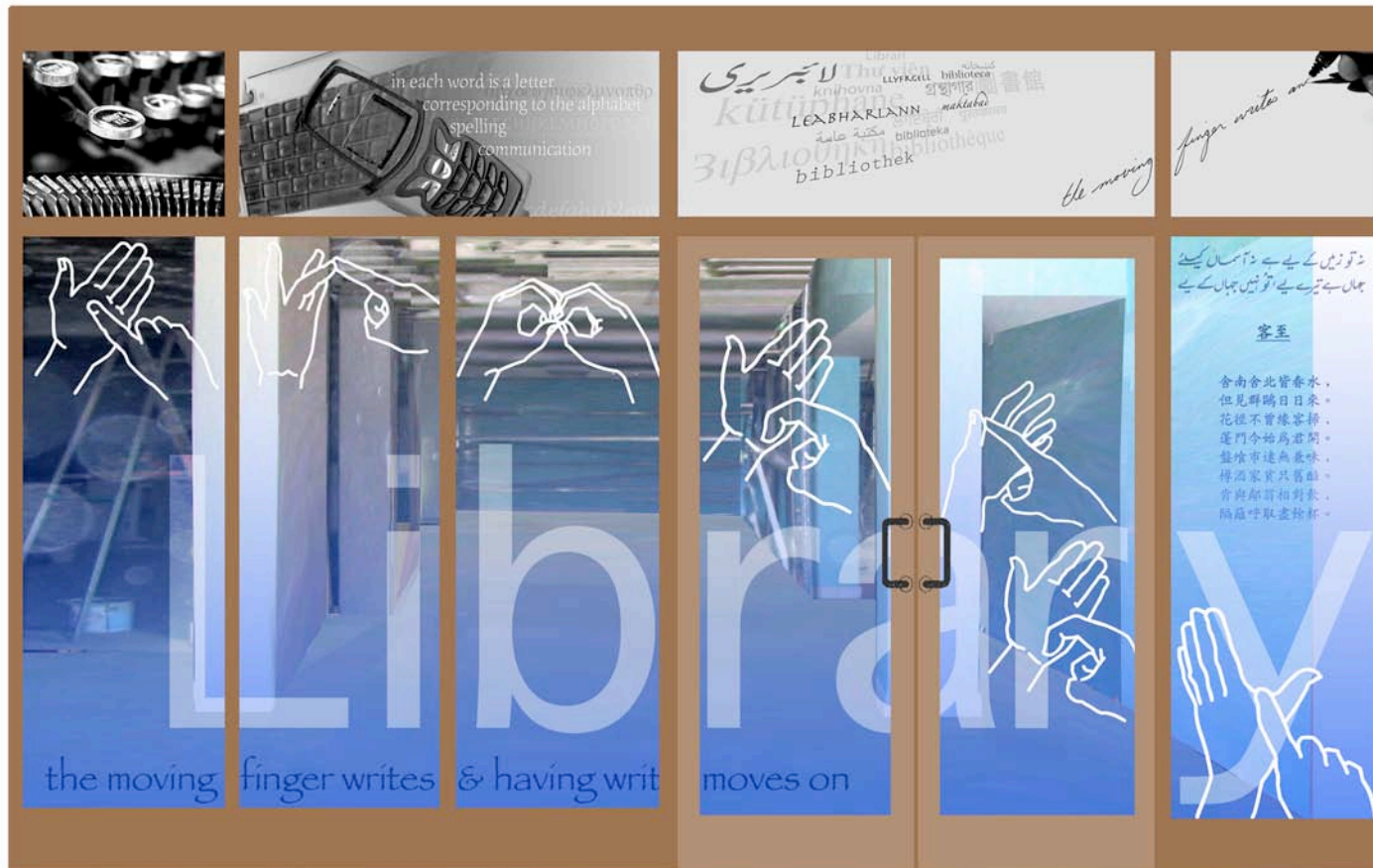
For instance, they may incorporate abstractions derived from photos of the children or extracts of their creative work such as line drawings & painted blocks of colour....



## THE LIBRARY GLAZING

The aim here is to develop a multi-lingual & culturally inclusive design for the glass panel entrance of the Library.

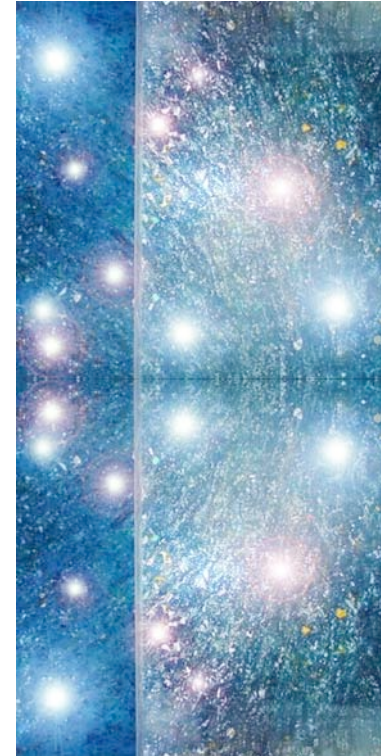
This idea emerged during a conversation with Suleman Barge about the Bedminster Library.



Bedminster Library foyer glazing.



## RESPONSIVE LIGHT FEATURE



Spanning the ground and first floor is a glass screen.

At ground level it is visible to the public from the reception area, and also to staff & children from inside the school.

On the first floor it is situated in a main hallway in proximity to the library.

On each side of this screen will hang a sheet of plastic made from recycled water bottles & CDs (Smiles Plastics Ltd).

This sparkly 'cosmos' will come alive if there is enough quietness to trigger the mass of tiny LEDs. The site for this

work was agreed in conversation with Tom Mason from Architype. Above is a skylight which we hope will provide enough light for the work to be powered by solar energy.